

MONTHLY MEMBERSHIP PROGRESS REPORT

LOCATION INDIA

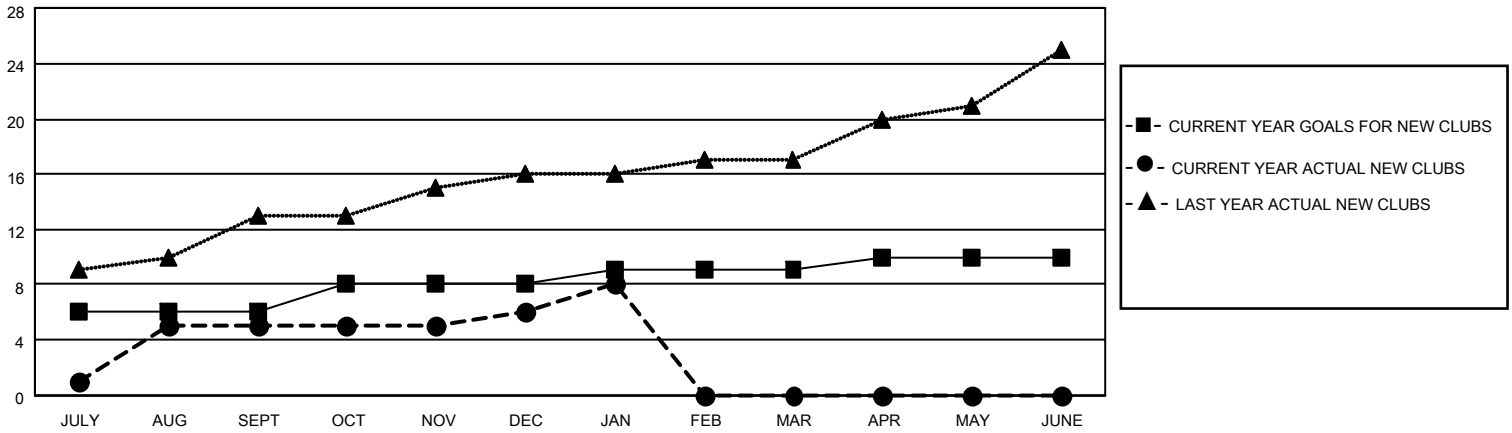
District 324 F

Results as of: 1/31/2023

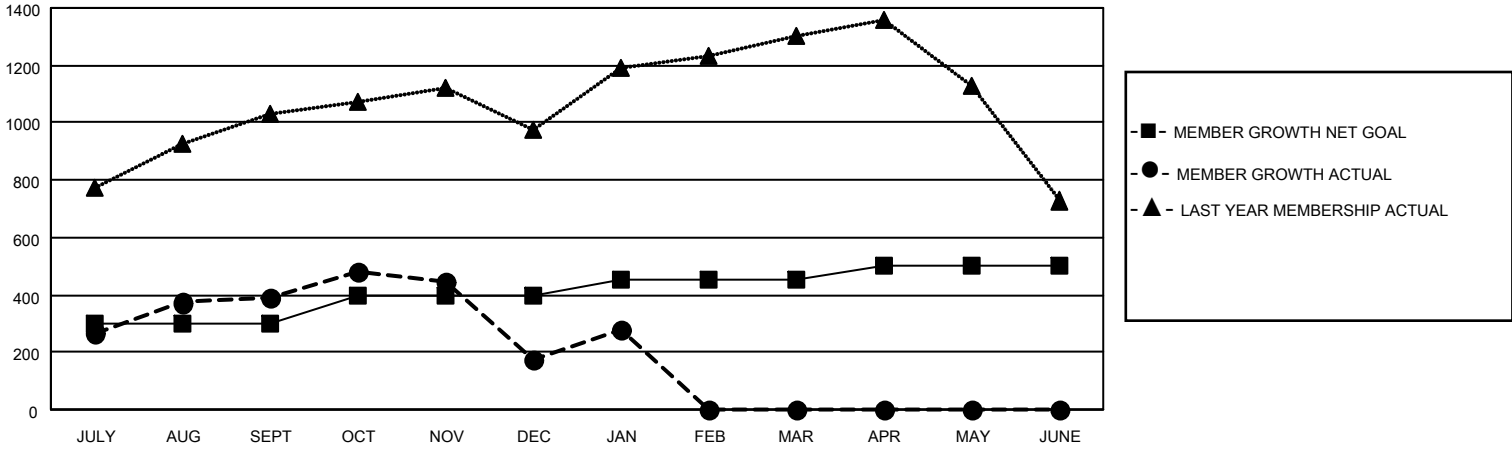
Clubs			
RESULTS FOR 2022-2023			
QUARTER	NEW CLUB GOAL	NEW CLUBS	DROPPED CLUBS
JULY/AUG/SEPT	6	5	1
OCT/NOV/DEC	2	1	5
JAN/FEB/MAR	1	2	1
APR/MAY/JUNE	1	0	0

Members			
RESULTS FOR 2022-2023			
QUARTER	MEMBER GROWTH NET GOAL	MEMBER GROWTH ACTUAL	DROPPED MEMBERS ACTUAL (including transfers)
JULY/AUG/SEPT	300	621	207
OCT/NOV/DEC	100	164	366
JAN/FEB/MAR	50	159	39
APR/MAY/JUNE	50	0	0

GOALS AND ACTUAL NEW CLUBS CUMULATIVE



GOALS AND ACTUAL MEMBERS CUMULATIVE



DROPPED CLUBS: 7

154 CLUBS OF 249 ADDED 1 OR MORE NEW MEMBERS

GENDER DISTRIBUTION

DROPPED MEMBERS

DECEASED	21
CLUB CANCELLED	171
OTHER	420
TOTAL	612

[CLICK HERE FOR CUMULATIVE MEMBERSHIP DATA](#)

MALE	9,132 (87.52%)
FEMALE	1,302 (12.48%)
NON BINARY	0 (0.00%)
PREFER NOT TO ANSWER	0 (0.00%)

TOTAL FAMILY UNIT MEMBERS 2,051

FAMILY MEMBERS PAYING HALF DUES 1,172